

Cathepsin B Polyclonal Antibody
Catalog # AP68862**Specification**

Cathepsin B Polyclonal Antibody - Product Information

| | |
|-------------------|------------------------|
| Application | WB, IHC-P |
| Primary Accession | P07858 |
| Reactivity | Human, Mouse, Rat |
| Host | Rabbit |
| Clonality | Polyclonal |

Cathepsin B Polyclonal Antibody - Additional Information**Gene ID** 1508**Other Names**

CTSB; CPSB; Cathepsin B; APP secretase; APPS; Cathepsin B1

Dilution

WB~~Western Blot: 1/500 - 1/2000. Immunohistochemistry: 1/100 - 1/300. ELISA: 1/5000. Not yet tested in other applications.

IHC-P~~N/A

Format

Liquid in PBS containing 50% glycerol, 0.5% BSA and 0.09% (W/V) sodium azide.

Storage Conditions

-20°C

Cathepsin B Polyclonal Antibody - Protein Information**Name** CTSB**Synonyms** CPSB**Function**

Thiol protease which is believed to participate in intracellular degradation and turnover of proteins (PubMed:12220505). Cleaves matrix extracellular phosphoglycoprotein MEPE (PubMed:12220505). Involved in the solubilization of cross-linked TG/tyroglobulin in the thyroid follicle lumen (By similarity). Has also been implicated in tumor invasion and metastasis (PubMed:3972105).

Cellular Location

Lysosome. Melanosome. Secreted, extracellular space {ECO:0000250|UniProtKB:A1E295}. Apical cell membrane {ECO:0000250|UniProtKB:P10605}; Peripheral membrane protein {ECO:0000250|UniProtKB:P10605}; Extracellular side {ECO:0000250|UniProtKB:P10605}.

Note=Identified by mass spectrometry in melanosome fractions from stage I to stage IV (PubMed:17081065) Localizes to the lumen of thyroid follicles and to the apical membrane of thyroid epithelial cells (By similarity) {ECO:0000250|UniProtKB:P10605, ECO:0000269|PubMed:17081065}

Tissue Location

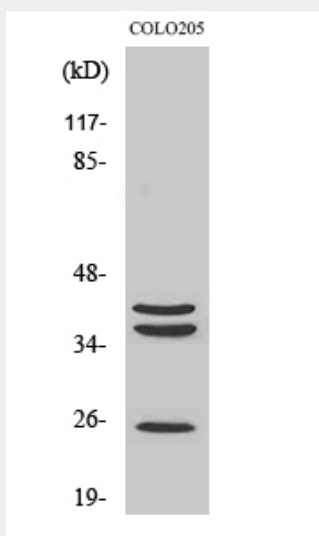
Expressed in the stratum spinosum of the epidermis. Weak expression is detected in the stratum granulosum

Cathepsin B Polyclonal Antibody - Protocols

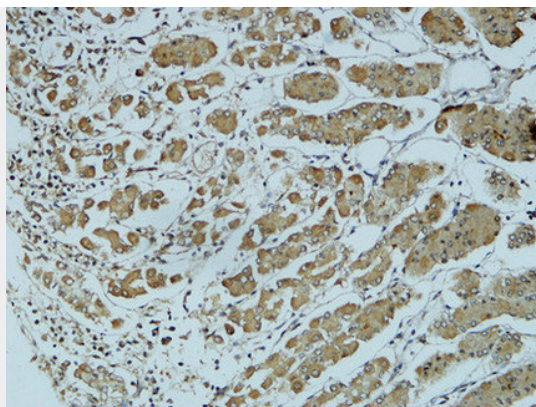
Provided below are standard protocols that you may find useful for product applications.

- [Western Blot](#)
- [Blocking Peptides](#)
- [Dot Blot](#)
- [Immunohistochemistry](#)
- [Immunofluorescence](#)
- [Immunoprecipitation](#)
- [Flow Cytometry](#)
- [Cell Culture](#)

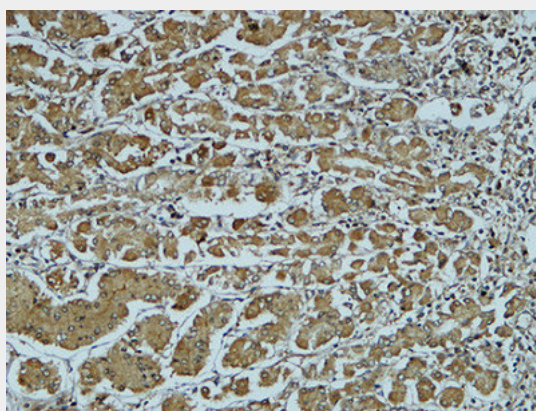
Cathepsin B Polyclonal Antibody - Images



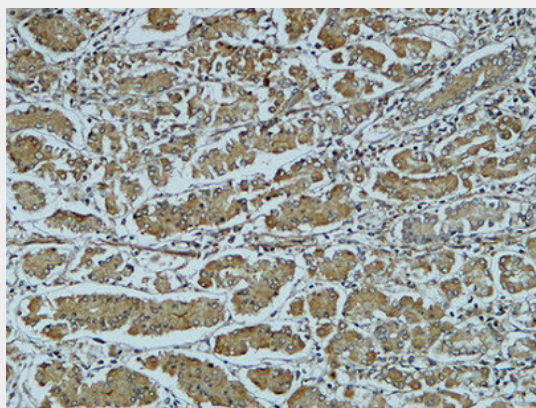
Western Blot analysis of various cells using Cathepsin B Polyclonal Antibody



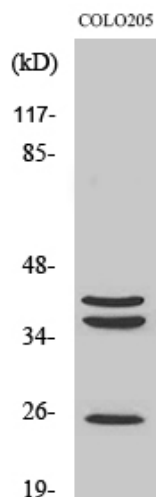
Immunohistochemical analysis of paraffin-embedded Human colon. 1, Antibody was diluted at 1:200(4°,overnight). 2, High-pressure and temperature EDTA, pH8.0 was used for antigen retrieval. 3,Secondary antibody was diluted at 1:200(room temperature, 30min).



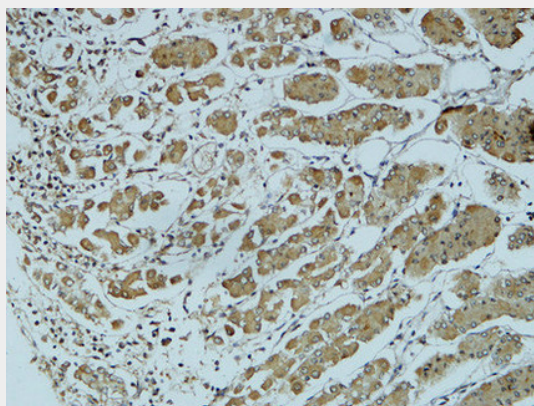
Immunohistochemical analysis of paraffin-embedded Human colon. 1, Antibody was diluted at 1:200(4°,overnight). 2, High-pressure and temperature EDTA, pH8.0 was used for antigen retrieval. 3,Secondary antibody was diluted at 1:200(room temperature, 30min).



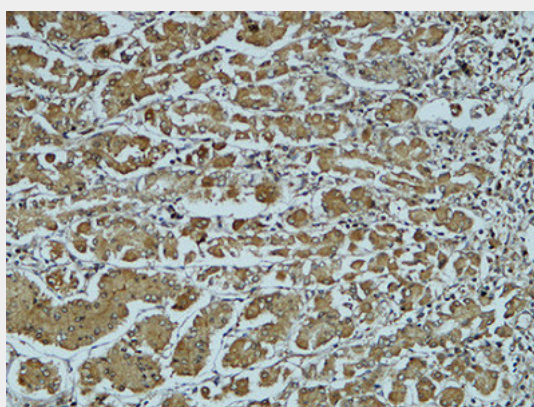
Immunohistochemical analysis of paraffin-embedded Human colon. 1, Antibody was diluted at 1:200(4°,overnight). 2, High-pressure and temperature EDTA, pH8.0 was used for antigen retrieval. 3,Secondary antibody was diluted at 1:200(room temperature, 30min).



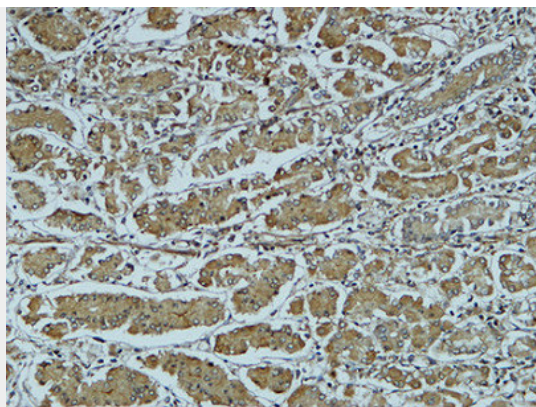
Western Blot analysis of various cells using Cathepsin B Polyclonal Antibody



Immunohistochemical analysis of paraffin-embedded Human colon. 1, Antibody was diluted at 1:200(4°,overnight). 2, High-pressure and temperature EDTA, pH8.0 was used for antigen retrieval. 3,Secondary antibody was diluted at 1:200(room temperature, 30min).



Immunohistochemical analysis of paraffin-embedded Human colon. 1, Antibody was diluted at 1:200(4°,overnight). 2, High-pressure and temperature EDTA, pH8.0 was used for antigen retrieval. 3,Secondary antibody was diluted at 1:200(room temperature, 30min).



Immunohistochemical analysis of paraffin-embedded Human colon. 1, Antibody was diluted at 1:200(4°,overnight). 2, High-pressure and temperature EDTA, pH8.0 was used for antigen retrieval. 3,Secondary antibody was diluted at 1:200(room temperature, 30min).

Cathepsin B Polyclonal Antibody - Background

Thiol protease which is believed to participate in intracellular degradation and turnover of proteins (PubMed:12220505). Cleaves matrix extracellular phosphoglycoprotein MEPE (PubMed:12220505). Has also been implicated in tumor invasion and metastasis (PubMed:3972105).